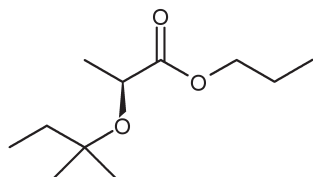


Floral

Aromatic Herbal

SCLAREOLATE®

981816



Propyl (2S)-2-(1,1-dimethylpropoxy)propanoate

## REFERENCES

CAS number: **0319002-92-1**

FEMA number: -

REACH number: **01-0000018277-65**Stabilizer: **None added**Solvent: **None added**Firmenich code: **981816**

## Tenacity

Lasts 2 hours  
on a smelling strip.

1 month

3 weeks

2 weeks

1 week

4 days

3 days

2 days

1 day

6 hours

3 hours

2 hours

1 hour

## OLFACTIVE NOTE

SCLAREOLATE® is a very natural white floral sage note, between Linalol and Linalylacetate.

## PERFUMERY USAGE

SCLAREOLATE® can be used like Linalol, Dihydromyrcenol and Coranol with high and low dosages for different effects.

## PHYSICO-CHEMICAL PROPERTIES

appearance	Colourless liquid
flashpoint	87°C
vapour pressure	12.08 Pa at 20°C
purity	min 98%
log p (measured)	3.39
molecular weight	202

## STABILITY &amp; PERFORMANCE

RECOMMENDED APPLICATIONS	STABILITY	TYPICAL % USE	SUBSTANTIVITY & REMARKS	
<b>fine fragrances</b>	■■■■■	0.5 - 5%	<b>Top note</b>	
<b>shampoo</b>	■■■■	1 - 10%	wet: ■■■■	dry: ■
<b>shower gel</b>	■■■■	1 - 10%	bloom: ■■■■	
<b>soap</b>	■■■■	0.5 - 5%	foam: ■■	dry hand: ■
<b>detergent</b>	■■■■	0.5 - 5%	wet: ■■	dry: ■
<b>softener</b>	■■■■	0.5 - 5%	wet: ■■■■	dry: ■
<b>APC</b>	■■■■	0.5 - 5%	-	
<b>candle</b>	■■■■	1 - 10%	cold wax: ■■	burning: ■■